



**PressureSealTrac™
Installation Guide
User Guide**

**Version 1.2
April 12, 1999**

PRESSURESEALTRAC™ REVISION HISTORY

Revision Number	Date	Comments
1.0	April 11, 1999	- Initial release of PressureSealTrac
1.1	April 23, 1999	- Added new functionality to INI file for more flexibility in using PressureSealTrac in a JetForm Central job
1.2	April 26, 1999	- Added option to write a Job Card to the Single and Multiple page output files or not. This allows the choice of setting up one job to handle all activities (job steps) or creating a separate job to handle the output from PressureSealTrac.

PressureSealTrac™ Installation Guide and User Guide
April 12, 1999

Copyright© Pro Technology Automation, Inc., 1999
All rights reserved.

Trademarks

JETFORM is a trademark of JETFORM Corporation.

TABLE OF CONTENTS

1.0	INTRODUCTION.....	5
1.1.	PURPOSE.....	5
1.2.	BACKGROUND	5
1.3.	ORGANIZATION OF THIS DOCUMENT	6
1.4.	TECHNICAL SUPPORT	6
2.0	INSTALLATION AND CONFIGURATION OF PRESSURESEALTRAC™	7
2.1.	PRESSURESEALTRAC™ INSTALLATION PROCEDURES	7
2.2.	CONFIGURING THE PRESSURESEALTRAC.INI FILE.....	9
2.3.	CONFIGURING THE TASK IN THE JOB MANAGEMENT DATABASE.....	10
3.0.	RUNNING PRESSURESEALTRAC™	13
3.1.	SUBMITTING TRANSACTION FILES TO JETFORM CENTRAL	13
3.2.	HOW PRESSURESEALTRAC™ IS TRIGGERED.....	13
3.3.	WHAT PRESSURESEALTRAC™ DOES.....	13
3.4.	JETFORM CENTRAL LOG FILE	13

1.0 INTRODUCTION

1.1. Purpose

This document is a guide to installing, configuring and using the PressureSealTrac™ Custom Agent. This document includes detailed instructions for installation and configuration in the JetForm Central Job Management Database and example files to help you see how the program works.

1.2. Background

There are time when Moore wants to sell a Pressure Seal application (invoices, checks, etc.) but there is an issue with single page vs. multiple page documents being mixed in the same data file. Pressure Seal is a machine that folds and seals a one page document (check, invoice, etc.) to eliminate the manual folding, inserting into window envelope, etc.

What Moore tells the customer now is to do one of the following: 1) The customer needs to give Moore separate data files for single vs. multiple pages or 2) if the percentage of multiple page documents is low, the customer can manually sort through the printed output and separate the multiple page documents before they get folded/sealed in the Pressure Seal. From an “image” standpoint, it is not really impressive for a vendor/customer/employee to get multiple pages of an invoice, statement, PO, check, etc. in separate first class pressure seal documents.

We developed a Custom Agent called PressureSealTrac to run in JetForm Central to handle this situation. Here’s how it works. Let’s say that the customer gives us a data file with mixed single and multiple page invoices. We run it through the Transformation Agent to create a Field Nominated File. The Transformation Agent would use the appropriate Section Triggers to detect multiple page documents (from the input file) and put all the detail lines for each invoice together (e.g. for pages 2+ of a multiple page invoice we would ignore the headers and footers and grab just the detail).

We then run PressureSealTrac that would read in the Field Nominated File and evaluate each document (invoice, check, etc.) to determine if it would be a one page (in the new JetForm form) or multiple pages. We do this by determining how many details would fit on a single page (including the footer/total section if applicable). This value (let’s say a maximum of 40 lines of detail would fit on a one page invoice) would be in an INI file set up for that particular application. PressureSealTrac would write the one page invoices to a "One Page" file and multiple page invoices to a "Multiple Page" file, each with a different job name and printer. These two data files are written back to the Collector directory and the appropriate job/form is called or all processing can occur in one job through running multiple job steps. The one page documents are printed on Pressure Seal stock and the multiple page documents are printed on white paper stock (or any other kind of stock on any printer).

PressureSealTrac™ is written in Java so it will run on any platform that supports the Java RunTime Environment (JRE), which includes Windows and Unix. Instructions are provided in this document for downloading the JRE for your platform.

1.3. Organization of this Document

Section 1: Introduction

Section 2: Installation and Configuration Procedures for PressureSealTrac™

Section 3: Running PressureSealTrac™

1.4. Technical Support

If you need assistance in installing and configuring PressureSealTrac™, call Pro Technology Automation, Inc. at 805-527-1248 or email us at support@protechinc.com. Please note that the PressureSealTrac™ license fee does not cover technical support so there may be an additional charge. Please ensure you read these instructions carefully before calling for technical support.

2.0 INSTALLATION AND CONFIGURATION OF PRESSURESEALTRAC™

2.1. PressureSealTrac™ Installation Procedures

Installing PressureSealTrac™ is a two step process. You will receive an installation EXE file. Simply double click on the EXE file and follow the instructions. The following files will be installed:

<u>Folder name</u>	<u>Filename</u>	<u>Description</u>
C:\jfsrvr\CustomAgents\PressureSealTrac	PressureSealTrac.class	Java class (program)
C:\jfsrvr\CustomAgents\PressureSealTrac	PressureSealTrac.ini	INI file
C:\jfsrvr\CustomAgents\PressureSealTrac	PressureSealTrac User Guide.pdf	– this document
C:\jfsrvr\CustomAgents\PressureSealTrac	RunPressureSealTrac.bat	sample batch file to test INI file
C:\jfsrvr\CustomAgents\PressureSealTrac	Test.dat	sample data file to test

The second step is to install the latest version of the Java™ RunTime Environment (JRE). For Windows 95/98/NT, install JRE 1.1.8 (Maintenance Release) for Windows. You can download this at:

<http://java.sun.com/products/jdk/1.1/jre/index.html>
<http://www.javasoft.com/products/jdk/1.1/jre/download-jre-windows.html>

For Unix platforms, JRE may already be installed as part of the operating system. If it is not, contact the manufacturer of your server/workstation to find out where to download it.

For Sun Solaris 7, download JRE at:

<http://www.sun.com/solaris/jre/index.html>

For AIX, OS/2 or OS/400, download JRE at:

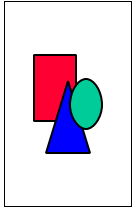
<http://www.ibm.com/java/jdk/>

For Digital Open VMS, Digital Unix 4.0x or Digital Windows NT Alpha, download JRE at:

<http://www.digital.com/java/download/>

For HP-UX, download 1.1.7 HP-UX 10.20 JRE at:

<http://www.hp.com/go/java>, then click on “Download software for HP-UX Systems”, then scroll down and select “1.1.7 HP-UX 10.20 JRE”. Accept the license then you will see the following:



HP-UX Runtime Environment for Java™ Release 1.1.7 for HP-UX 10.2

1. The products will be installed under `/opt/java/jre`.
If you had a previous installation, please uninstall it using `swremove` and move any personal files from your existing `/opt/java/jre` directory before you begin the new installation.
2. You need approximately 20 MB of disk space on your system to install the software.
Download the software into a location with adequate space. We'll use the directory `/tmp` in our example..
 - [Download HP-UX Developer's Kit for Java](#) (checksum 3227938932 6113280)

Note: Some browsers don't recognize the depot format and download the file as a text file. If this happens, download by pressing the shift key at the same time you press your mouse button. To verify that the file downloaded correctly, at the UNIX prompt run the command `cksum <filename>`. If the file downloaded correctly, the checksum number for the file you downloaded should match the checksum number given above for that file.
Report any download problems to gojava@cup.hp.com.
The download file runs on both Workstations and Servers.
3. As root user, use the SD-UX `swinstall` command to install the software:
`/usr/sbin/swinstall&`
It will lead you through the installation. We recommend you **select** the "Reinstall filesets" and **unselect** the "Mount filesystems" option from the options menu. Change the Source Depot Type to "Local Directory" and change the Source Depot Path to `/tmp/<filename>`. (If you used a directory other than `/tmp` in step two, replace `/tmp` with that directory name.)
4. After completing the installation, remove `/tmp/<filename>` (our example) with `rm -f /tmp/<filename>`.
5. The HP-UX Runtime Environment for Java `jre.tar.Z` file is now under `/opt/java/jre`. The `jre.tar.Z` file contains the set of files that you may place in your application. Your installation script will need to install the files contained in `jre.tar.Z` into an appropriate location. Be sure to read the accompanying **jre.release.notes** file for information on how you may use the HP-UX Runtime Environment for Java
6. For support for your software, see [Support](#)

Java and all Java-based trademarks and logos are trademarks or registered trademarks of Sun Microsystems, Inc. in the U.S. and other countries. Hewlett-Packard is independent of Sun Microsystems, Inc.

2.2. Configuring the PressureSealTrac.ini file

There are two main steps to complete the configuration of PressureSealTrac. The first is to set up and test the PressureSealTrac.INI file. The second is to set up a task and job step in the Job Management Database in JetForm Control.

To set up the INI file, open PressureSealTrac.ini. The fields are set up as follows:

<u>Line</u>	<u>Value</u>	<u>Description</u>
1	C:\jfsrvr\data\jfserver.tfs	Fully qualified filename for Single page documents output file
2		Job card for One page documents
3	C:\jfsrvr\data\jfserver.tfm	Fully qualified filename for Multiple page documents output file
4		Job card for One page documents
5	StartRec	First field in each document for Field Nominated File
6	VENDOR_INVOICE_NO	Field name for Detail field
7	29	Number of detail lines for one page document

Line 1 would be whatever name in whatever location you wished to write all Field Nominated Records for Single Page documents. This will depend on how you want to set up the job processing in JetForm Central. We recommend you write to the Collector Directory with a filename of jfserver.tfs which can then be used in the next job step to do further processing.

Line 2 is optional and would contain a job card for Single Page documents if you wish to output a file for processing in a different job. If you are going to do all processing in the same job then leave this line blank

Line 3 would be whatever name in whatever location you wished to write all Field Nominated Records for Multiple Page documents. This will depend on how you want to set up the job processing in JetForm Central. We recommend you write to the Collector Directory with a filename of jfserver.tfm which can then be used in the next job step to do further processing.

Line 4 is optional and would contain a job card for Multiple Page documents if you wish to output a file for processing in a different job. If you are going to do all processing in the same job then leave this line blank.

Line 5 would be the field name (without the ^field or ^global) for the very first field in each document in the input file. In order to set this you need to understand the structure of your Field Nominated File. If you need help on understanding this, give us a call.

Line 6 is the field name (without the ^field or ^global) for the first field in each detail line. This is the field that we will count the number of occurrences to determine if the detail lines will fit on one page or multiple pages.

Line 7 is the number of detail lines that will fit on a one page document. This is determined by the forms designer in how they set up the detail section of the form.

2.3. Configuring the task in the Job Management Database

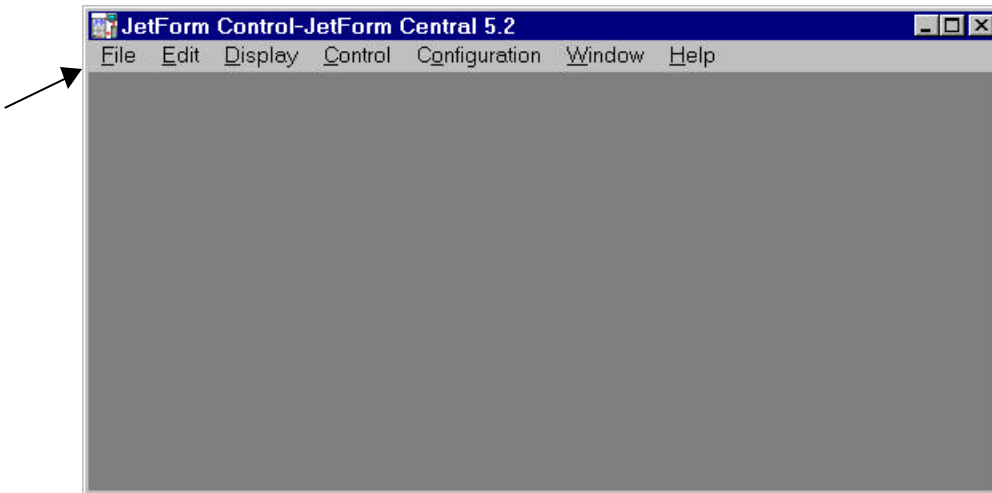
PressureSealTrac will take in three files in the command line arguments:

<input file> <ini file> <log file>

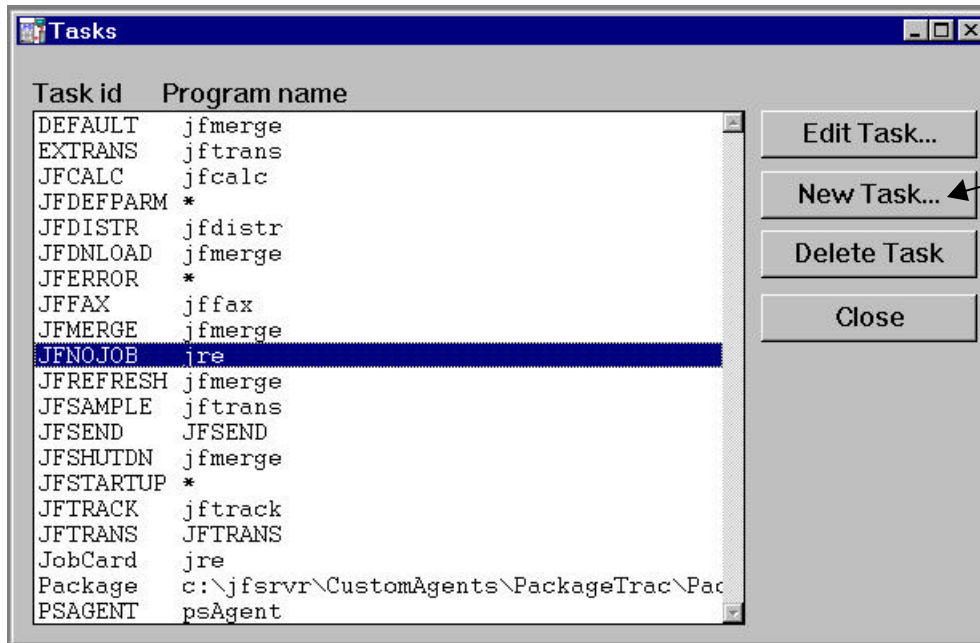
The input file is the Field Nominated File created by the previous job step (usually through the JetForm Central Transformation Agent). The INI file is the file with all the definitions as specified in Section 2.2. The log file is the fully qualified JetForm Central logfile name.

To add the PressureSealTrac custom agent in JetForm Control for Windows platforms:

1. Start JetForm Control by clicking Start, Programs, JetForm Central, JetForm Control (may be slightly different for your installation). You will get the following screen:



2. Modify the JFNOJOB task by clicking on File, Job Management Database, Tasks. You will get the following screen:



3. Create a new task by clicking New Task. Set up the Task Definition with the following information:

Task Id:	Pressure
Program name:	jre
Program options:	-cp c:\jfsrvr\CustomAgents\PressureSealTrac PressureSealTrac @InFile c:\jfsrvr\CustomAgents\PressureSealTrac\PressureSealTrac.ini c:\jfsrvr\jfsrvr.log
Comment:	Custom Agent for PressureSealTrac

Notes:

- The Program Name of jre is the Java program. This will be specified differently for each platform that PressureSealTrac is installed on.
- The Program Options are `-cp` (for Change Path of the Java Class), followed by the Java Class name, followed by the variable `@InFile` (for the input filename), followed by the fully qualified filename for the PressureSealTrac INI file, followed by the fully qualified filename for the JetForm Central log file.

Your screen will look like the following. Note that the screenshot is not wide enough to show all the program options:

Edit Task

Task Id:

Program name:

Program options:

Comments:

4. Click OK to save the Task Definition.
5. Now you must create a job step that calls the PressureSealTrac task. This would be one of the job steps in the complete job you are setting up. To set up a new job, from JetForm Control main screen click File, Job Management Database, Jobs, then New Job. Define the rest of the steps that you need. The screen for the PressureSealTrac step would look something like this:

Edit Job Step

Job name:

Task

Task id:

Input file: Output file: On error:

Form file:

Preamble file:

Printer

Printer name:

Macro number: Load flag:

Comments:

6. Close all windows, get back to the main JetForm Control screen and update the Job Management Database by clicking on Control, Reload Job Management DB.

3.0. RUNNING PRESSURESEALTRAC™

3.1. Submitting transaction files to JetForm Central

To submit a transaction file to JetForm Central, you place a data file into the Collector Directory. There are a number of ways to do this depending on the platform that you are running JetForm Central. You can FTP the file, use the JetForm Print Processor, use Named Pipes or simply copy the file.

3.2. How PressureSealTrac™ is triggered

As PressureSealTrac is set up as one of the steps of a job, whenever a job is triggered that needs to use PressureSealTrac, the processing happens automatically.

3.3. What PressureSealTrac™ does

See Section 1.2 for a detailed description of the functionality of PressureSealTrac.

3.4. JetForm Central Log File

PressureSealTrac™ conforms to all JetForm requirements as a Custom Agent. It writes a status to the log file and creates the JETFORM.RSP. Here is a sample entry in the log file for a successful run of PressureSealTrac:

```
19990411171144 PressureSealTrac : Status 0, processing completed
```